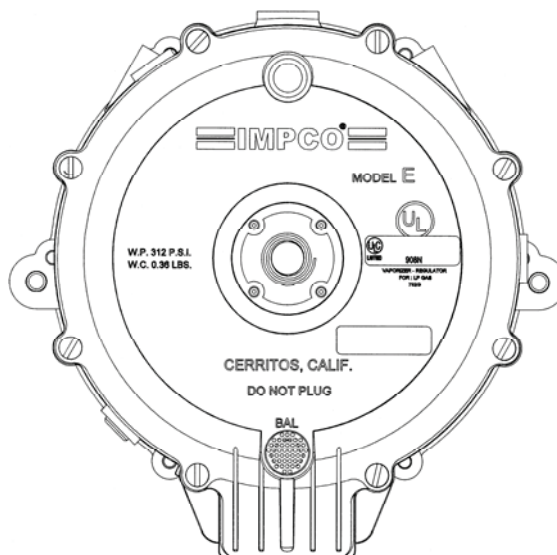


MODEL E & PE REGULATORS

REGULATORS



MODEL E & PE REGULATORS



DESCRIPTION

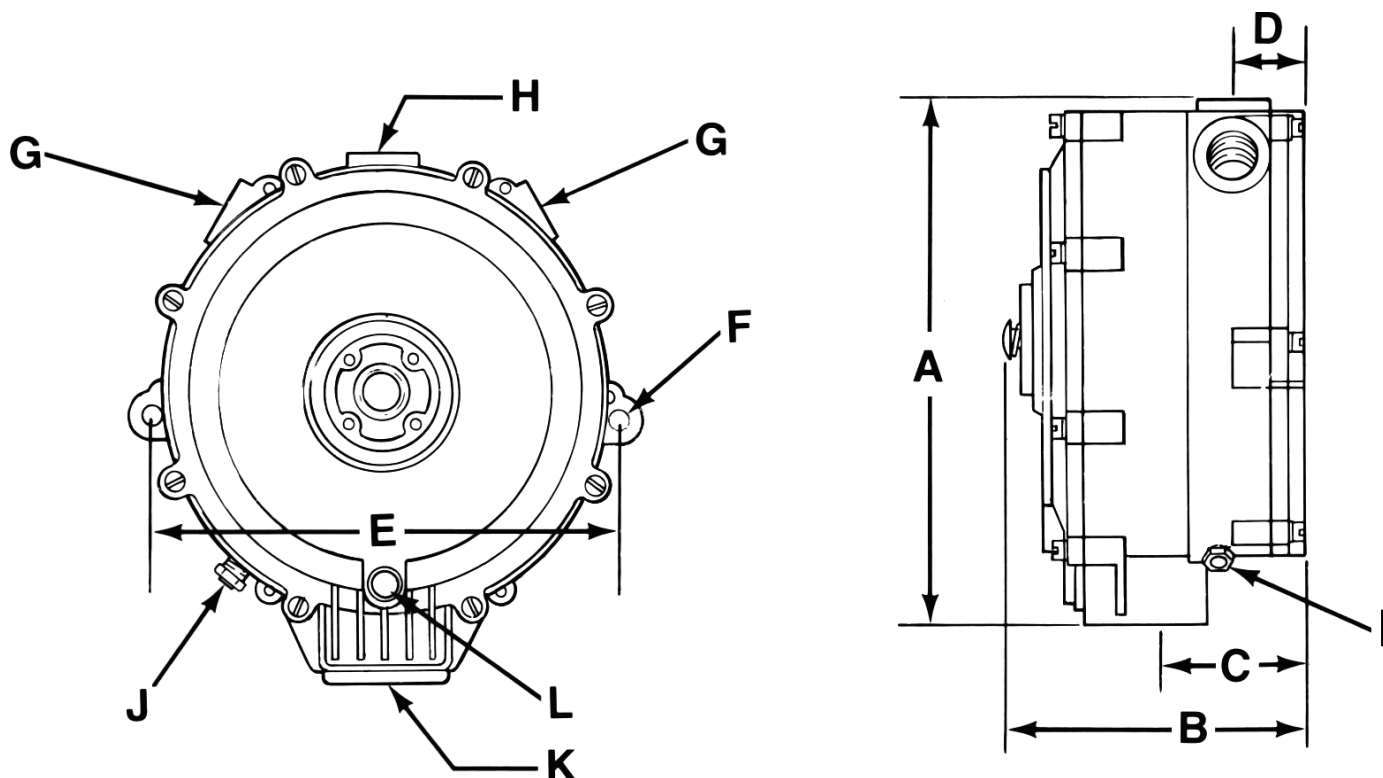
The model E & PE are engine heated two-stage regulator/vaporizers. The model E provides a choice of two negative outlet pressures. A blue secondary spring to provide a -1.5" w.c. (0.37 kPa) output and an optional orange secondary spring, provides -0.5" w.c. (0.12 kPa) output. A manual primer is standard on the Model E.

The model PE provides a positive outlet pressure for applications that require a positive feed system and/or the ability to vaporize liquid fuel. A heated regulator/vaporizer is not required of CNG (it is recommended that the Model PEV be used for these systems). Additional mixture stability is possible with the PE as a result of a more consistent fuel temperature gained through the use of the heated labyrinth. The PE is supplied as a fixed outlet pressure regulator but can be converted to an adjustable unit with the AC1-74 retrofit kit.

SPECIFICATIONS

Fuel Type	LPG Liquid/Vapor and Natural Gas
Inlet Pressure	
Maximum.....	312 psi (21.51 Bar)
Minimum.....	30 psi (207 kPa)
Operating Pressure:	
Model E	-1.5" w.c. (-0.37 kPa) Standard
Model PE	Nominal +5.0" w.c. (1.2 kPa) fixed
HP/kW	HP/kW 325 hp (242 kW) peak, 200 hp (150 kW) continuous
Operating Temperature Range	-40°F to +250°F (-40°C to +121°C)
Fuel Filtration	40 micron
Heating Chamber Source.....	Required for liquid LPG
Mounting Position.....	Vertical, with outlet down recommended. Horizontal position can be used when fuel contamination can be controlled with HD-5 specified LPG fuel
Diaphragm Material	Hydrin, silicone and fluorosilicone (optional)
Applications	Stationary, mobile, industrial and automotive
Certification	UL (AU2317 & AU1502) Inquire for specific ECE approval

DIMENSIONS



Model E Shown

	A	B	C	D	E	F	G	H	I	J	K	L
			BACK OF CONVERTER TO CTR. OF FUEL OUTLET	BACK OF CONVERTER TO CTR. OF WATER OUTLET	MOUNTING HOLE CTR. TO CTR.	MOUNTING HOLES DIA.	COOLANT INLET AND OUTLET (NPT)	FUEL INLET (NPT)	PRIMARY TEST PORT (NPT)	SECONDARY TEST PORT (NPT)	FUEL OUTLET (NPT)	VENT BALANCE LINE (NPT)
EB, EB-2, EB-2ULC	184 mm (7.250")	102 mm (4.000")	50.8 mm (2.000")	25.0mm (0.98")	168 mm (6.625")	7.1 MM (0.281")	3/8"	1/4"	1/8"	1/8"	1"	1/8"
PE	184 mm (7.250")	114 mm (4.500")	50.8 mm (2.000")	25.0mm (0.98")	168 mm (6.625")	7.1 MM (0.281")	3/8"	1/4"	1/8"	1/8"	1"	1/8"
PE-8	184 mm (7.250")	127.7 mm (5.03")	50.8 mm (2.000")	25.0mm (0.98")	168 mm (6.625")	7.1 MM (0.281")	3/8"	1/4"	1/8"	1/8"	1"	1/8"
T-EB-2	184 mm (7.250")	102 mm (4.000")	50.8 mm (2.000")	25.0mm (0.98")	168 mm (6.625")	7.1 MM (0.281")	3/8"	1/4"	1/8"	1/8"	1"	1/8"

MODEL E & PE REGULATORS

REGULATORS



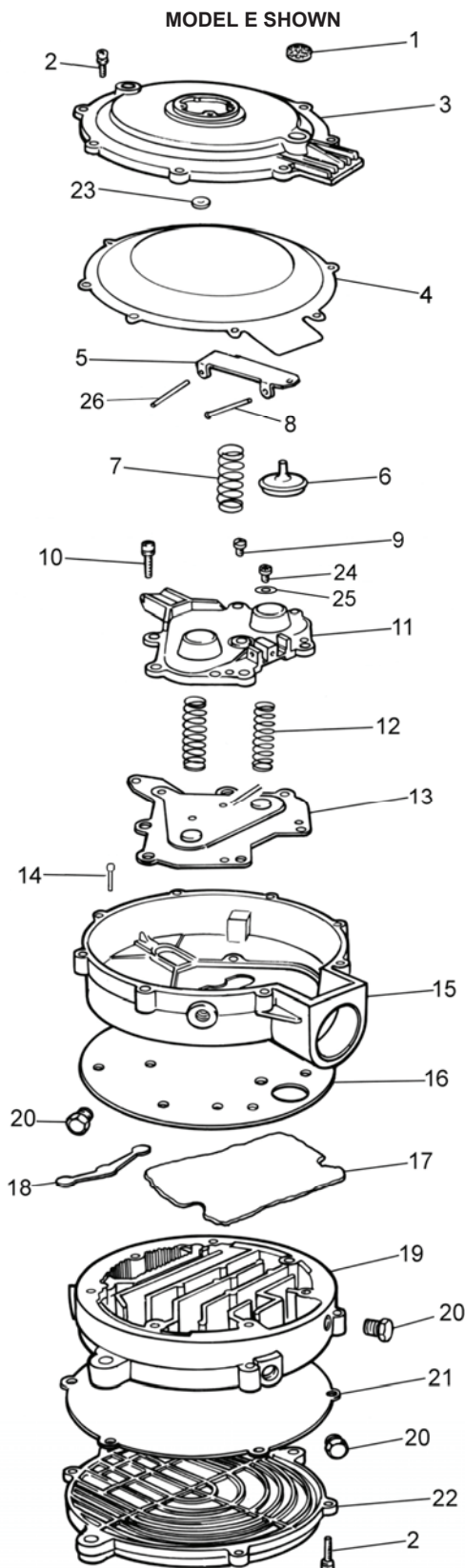
COMPONENTS

ITEM #	PART #	DESCRIPTION
1	NSS	Screen, Atmospheric Vent
2	S1-3*	Screw, 10-24 x 5/8" SEMS (8)
3	NSS	Cover, Secondary
4	NSS* (1)	Diaphragm, Secondary, Hydrin Model E
	NSS* (2)	Diaphragm, Secondary, Silicone Model E
	NSS* (3)	Diaphragm, Secondary, Flourosilicone E
	NSS* (4)	Diaphragm, Secondary, Hydrin PE
	NSS* (5)	Diaphragm, Secondary, Silicone PE
5	NSS*	Lever, Secondary w/ or w/o Hole
6	NSS*	Seat, Secondary
7†	S2-22	Spring, Secondary Regulator (Blue), Standard
	S2-23	Spring, Secondary Regulator (Orange), Optior
8	NSS	Pin, Secondary Lever Fulcrum (Early Model)
	NSS	Pin, Secondary Lever Fulcrum (Later Model)
9	NSS*	Screw, 10-24 x 3/8" SEMS
10	NSS* (1)(2)(3)	Screw, 12-24 x 1 1/8" SEMS Model E Only
11	NSS	Cover, Primary Diaphragm (Early Model)
	NSS	Cover, Primary Diaphragm (Later Model)
12	NSS	Spring, Primary Regulator EB (2)
13	NSS*	Diaphragm Assy, Primary
14	NSS*	Pin, Primary Valve
15	NSS	Body, Regulator E Series
16	NSS*	Gasket, Regulator Body
17	NSS*	Sponge
18	NSS*	Seat, Primary
19	NSS	Body, Assy, Heat Exchanger
20	NSS	Plug, Hex Head, 1/8 NPT (3)
21	NSS*	Gasket, Heat Exchanger Cover
22	NSS	Cover, Heat Exchanger
23	NSS*	Washer, hand primer
24	NSS	Screw 8-32 x .25" (Later Model)
25	NSS	Flat Washer (Later Model)
26	NSS*	Pin, Lever Diaphragm Link

NSS = Not Serviced Separately

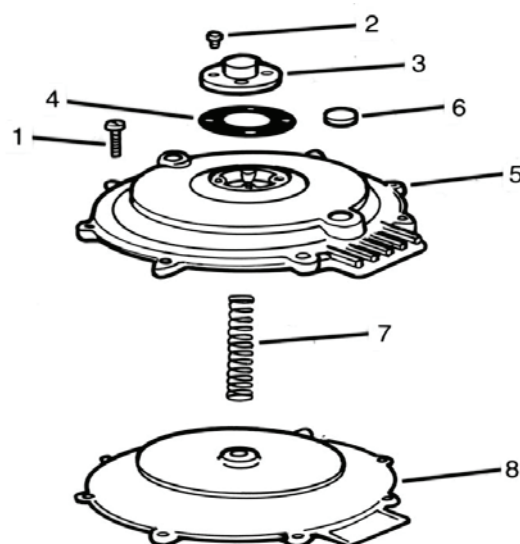
* Repair kit components. (1) = RK-E; (2) = RK-E-2;
(3) = RK-E-3; (4) RK-PE; (5) = RK-TE

† Two vapor outlet pressures are available. The Orange secondary spring gives Neg. 0.50" w.c. (Neg 0.12 kPa) pressure. Blue secondary spring gives a Neg. 1.50" w.c. (Neg. 0.37 kPa) pressure.



COMPONENTS (CONTINUED)
**C1-22-2 COVER
PE/PEV SERIES**

ITEM #	PART#	DESCRIPTION
1*	S1-3	Screw, 10-24 x 5/8" SEMS (8)
2*	S1-101	Screw, 6-32 x 1/4" SEMS (4)
3	H3-3	Housing, spring
4*	G1-84	Gasket, spring housing
5	NSS	Cover ass'y
6	S7-1	Screen, atmospheric vent
7	S2-37	Spring, secondary
	S2-42	Spring, secondary, PEV-1-8 only
8*	NSS	Diaphragm assembly, secondary, Hydrin

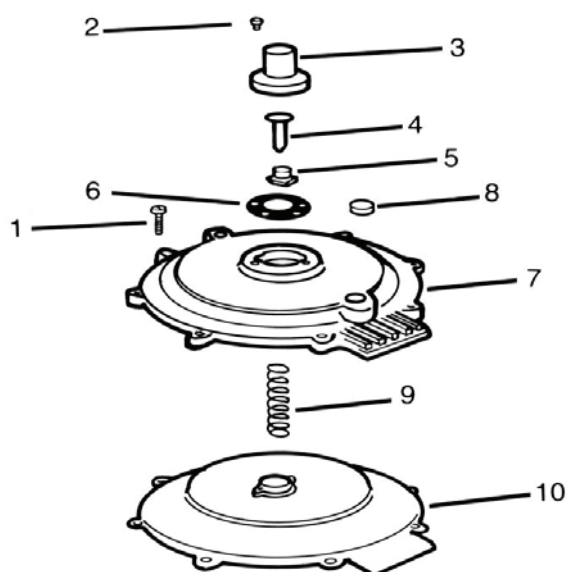


C1-22-2 Cover Shown with the H3-3 fixed spring housing.

**C1-22-2 COVER WITH AC1-74
PE/PEV-1 SERIES**

ITEM #	PART#	DESCRIPTION
1*	S1-3	Screw, 10-24 x 5/8" SEMS (8)
2*	S1-101	Screw, 6-32 x 1/4" SEMS (4)
3	NSS	Cover, adjustable PEV
4	NSS	Screw, PEV adjustment
5	NSS	Nut, PEV spring perch
6*	G1-84	Gasket, spring housing
7	AC1-22-2	Cover assembly
8	S7-1	Screen, atmospheric vent
	S2-37	3.7" to 6.5" w.c. (0.92 to 1.62 kPa)
	S2-42	5.0" to 9.0" w.c. (1.25 to 2.24 kPa)
9	S2-106	2.0" to 2.8" w.c. (.50 to 0.70 kPa)
	S2-109	2.7" to 3.9" w.c. (.67 to 0.96 kPa)
10*	NSS	Diaphragm assembly secondary, Hydrin

NSS = Not Serviced Separately



C1-22-2 Cover Shown with the optional AC1-74 Adjustable Spring Housing.

MODEL E & PE REGULATORS

REGULATORS



STANDARD AND OPTIONAL EQUIPMENT

FUEL CONTROL VALVES

PART #	DESCRIPTION
SV*	Start assist valve, electric solenoid
VPV*	Vacuum power valve
FCV	Fuel control valve, computer feedback system.

*Use in secondary accessory port

PRIMER

PART #	DESCRIPTION
AB1-28	Mechanical primer, for E-series converters (also fits J- & L-series, cannot be used w/ECI)

GAUGE

PART #	DESCRIPTION
G2-2	For Models E & L secondary lever

REPAIR KITS

PART #	DESCRIPTION
RK-E	Repair Kit Model E, Hydrin Diaphragm
RK-E-2	Repair Kit Model E, w/Silicone Diaphragm
RK-E-3	Repair Kit Model E, Fluorosilicone Diaphragm
RK-TE	Repair Kit Model E, Turbo w/Silicone Diaphragm
RK-PE	Repair Kit Model PE, Hydrin Diaphragm



MODEL E & PE REGULATORS

REGULATORS